

**FROST**  
DENMARK

BUKTO  
SHELF STAND

Fitting instruction  
Montageanleitung  
Monteringsvejledning  
Monteringsvægledning  
Montage hanleiding  
Manuel de montage

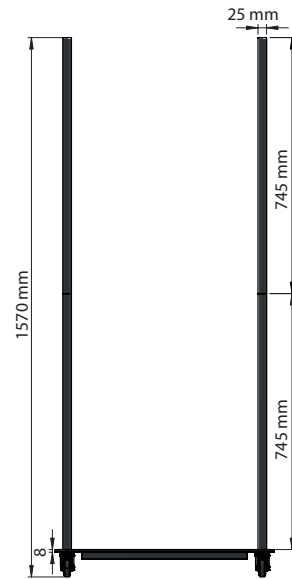
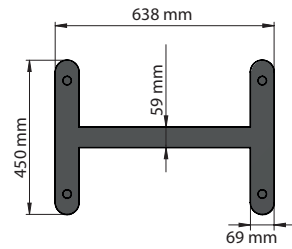
U6060-B + Shelves



U6060-W + Shelves



U6060



Shelves are purchased separately

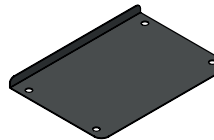
**U6060-638**  
Height: 23 mm  
Wid: 638 mm  
Projection: 450 mm  
Shelf thickness: 3 mm



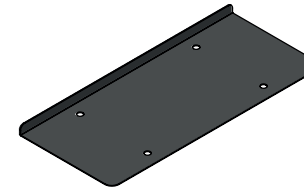
**U6060-1038**  
Height: 23 mm  
Wid: 1038 mm  
Projection: 450 mm  
Shelf thickness: 3 mm



**U6061-638**  
Height: 80 mm  
Wid: 638 mm  
Projection: 450 mm  
Shelf thickness: 3 mm



**U6061-638**  
Height: 80 mm  
Wid: 638 mm  
Projection: 450 mm  
Shelf thickness: 3 mm



**Cleaning and maintenance**

Powder coated surfaces should be cleaned with a microfibre cloth, glass cleaner or other non abrasive and gentle agents.

**Attention:**

Never use solvents or aggressive household cleaners like bleach, acids (e.g. descalers) or ammonia-based bathroom cleaner to clean the product. Steel wool and hard brushes can permanently damage the surface of the steel.

**Exclusion of liability**

FROST accepts no liability whatsoever for damage to persons or property that occurs or has occurred as a result of improper installation or maintenance, particularly if the safety instructions and other points to note listed are not or have not been observed in full.

**Warning and hazard notices**

Improper mounting or use can lead to accidents and serious injuries.

